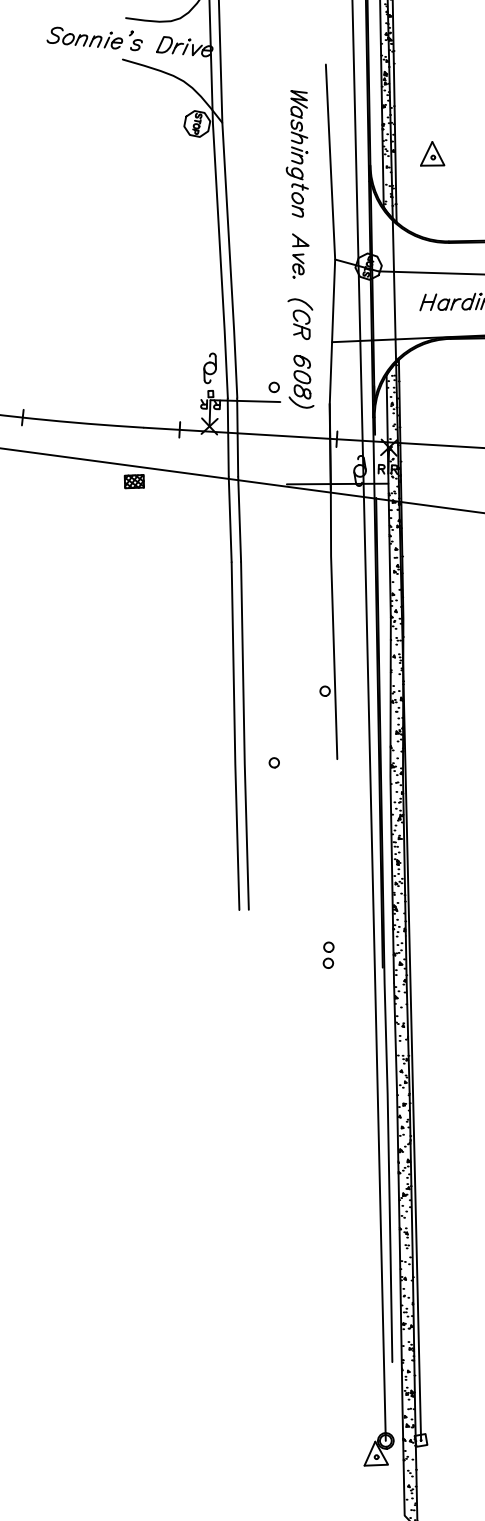
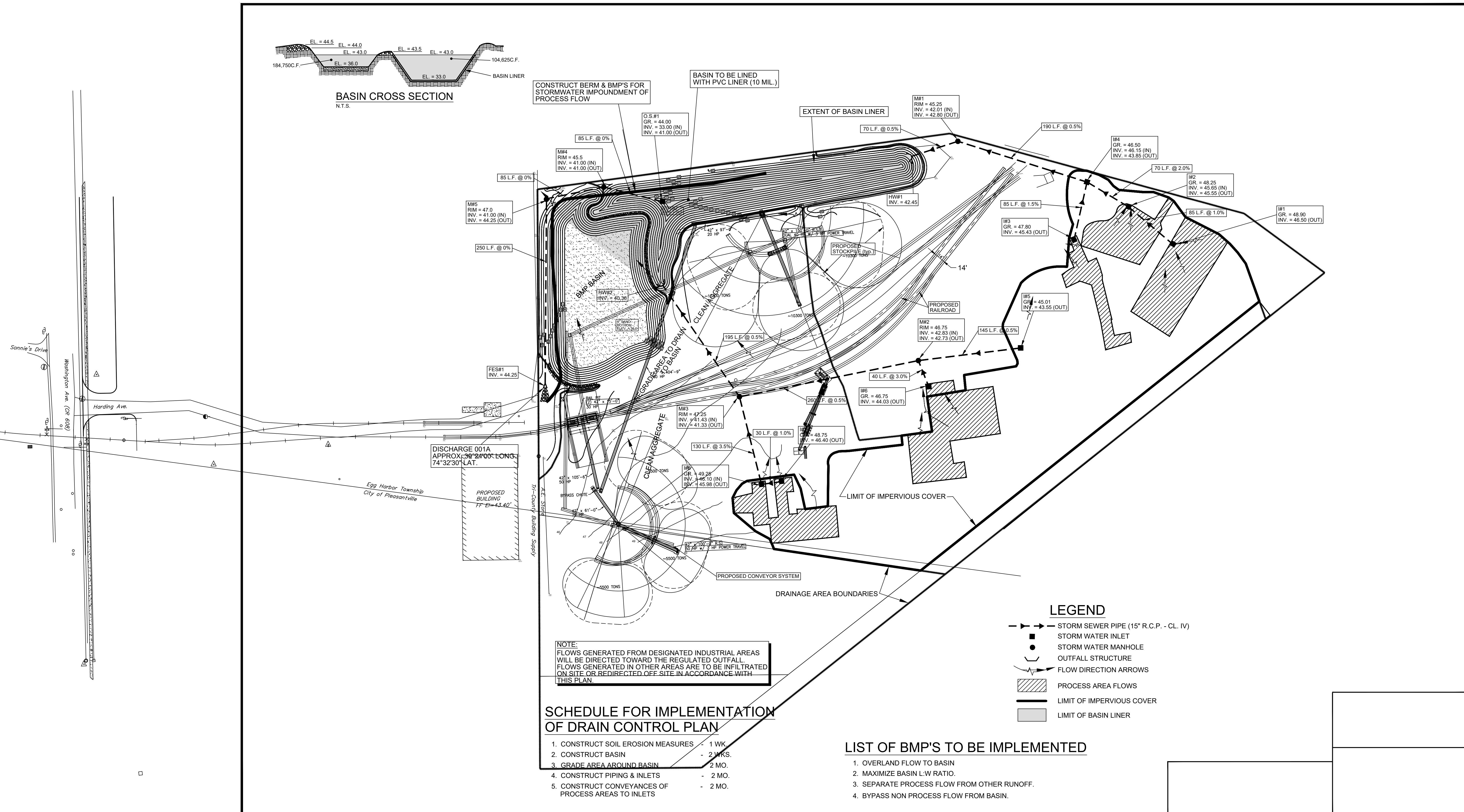


CONSTRUCT BERM & BMP'S FOR STORMWATER IMPOUNDMENT OF PROCESS FLOW

BASIN TO BE LINED WITH PVC LINER (10 MIL.)

EXTENT OF BASIN LINER



NOTE:
 FLOWS GENERATED FROM DESIGNATED INDUSTRIAL AREAS WILL BE DIRECTED TOWARD THE REGULATED OUTFALL. FLOWS GENERATED IN OTHER AREAS ARE TO BE INFILTRATED ON SITE, OR REDIRECTED OFF-SITE IN ACCORDANCE WITH THIS PLAN.

SCHEDULE FOR IMPLEMENTATION OF DRAIN CONTROL PLAN

1. CONSTRUCT SOIL EROSION MEASURES - 1 WK.
2. CONSTRUCT BASIN - 2 WKS.
3. GRADE AREA AROUND BASIN - 2 MO.
4. CONSTRUCT PIPING & INLETS - 2 MO.
5. CONSTRUCT CONVEYANCES OF PROCESS AREAS TO INLETS - 2 MO.

LEGEND

- STORM SEWER PIPE (15" R.C.P. - CL. IV)
- STORM WATER INLET
- STORM WATER MANHOLE
- OUTFALL STRUCTURE
- FLOW DIRECTION ARROWS
- ▨ PROCESS AREA FLOWS
- LIMIT OF IMPERVIOUS COVER
- ▭ LIMIT OF BASIN LINER

LIST OF BMP'S TO BE IMPLEMENTED

1. OVERLAND FLOW TO BASIN
2. MAXIMIZE BASIN L:W RATIO.
3. SEPARATE PROCESS FLOW FROM OTHER RUNOFF.
4. BYPASS NON PROCESS FLOW FROM BASIN.